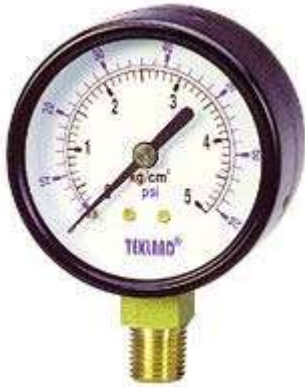


# TEKLAND

## DRY TYPE PRESSURE GAUGES, VACUUM GAUGES, COMPOUND GAUGES.

- SUITABLE FOR MEASUREMENT OF AIR PRESSURE, WATER PRESSURE, VACUUM PRESSURE, TOWN GAS, ETC.
- DIAMETER = 1", 1.5", 2", 2.5", 3", 4", 5", 6" (25, 40, 50, 60, 75, 100, 125, 150,)
- CONNECTION = 1/8", 1/4", 3/8", 1/2" NPT OR PT
- PRESSURE GAUGE = -76cm Hg ~ 0 ~ 500kg/cm<sup>2</sup> ( in Hg / psi)
- MATERIAL = CASE: STEEL, STAINLESS STEEL, PLASTIC.
- ACCURACY = 1.5%F.S.



P-A



P-AD



P-B



P-BD



V-B



C-A